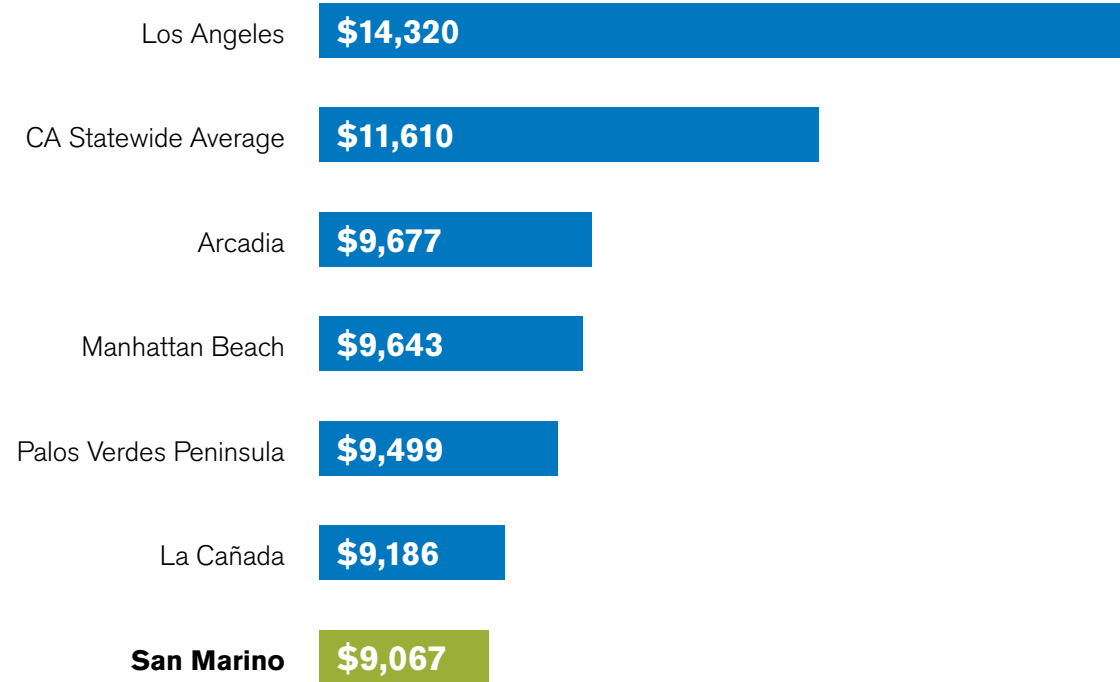




**SAN
MARINO
SCHOOLS
FOUNDATION**
Empowering Excellence.

Carver students view the solar eclipse, a real-life learning experience. August 21, 2017, 9:39 AM

Comparison of Per Pupil Government Funding by School District



CALIFORNIA SCHOOLS FUNDING — UPSIDE DOWN

In 1978 and 2013, political events turned the funding methods for education in California upside down with the passage of Prop 13 in 1978 and Local Control Funding Formula in 2013. Prop 13 changed the property tax structure and fund distribution for public schools in the state. San Marino's property taxes no longer get returned to San Marino. At present, all tax revenues go to Sacramento where they are distributed statewide according to a needs-based formula. Prop 13 and LCFF have left San Marino's schools to be funded by the state at a rate 25% lower than the California average. Today, San Marino remains at the bottom in state funding.

加州教育經費—天翻地覆的改變

在1978和2013年加利福尼亞州的教育經費投入方式兩度因政治事件而發生了天翻地覆的改變 -- 即1978年的第十三號提案和2013年的地方經費管控規定的通過。第十三號提案改變了加州房產稅的構成和州內公立學校獲取教育經費的計算方式。與過去聖瑪利諾的房產稅回歸聖瑪利諾學區的做法不同，新的規定要求州內所有的地產稅收入都要在首府沙加緬度的統一管理下按需分配。第十三號提案 和2015年的地方經費管控 讓聖瑪利諾學區獲得的教育經費比州內的平均值少了25%。直至今日聖瑪利諾學區所分配到的教育經費仍然在州內墊底。

CHALLENGE

RESPONSE

AN EXCEPTIONAL EDUCATION FOR OUR CHILDREN

Today, San Marino Schools Foundation's (SMSF) role has progressed to become one of leadership. It constantly seeks to empower excellence in our schools, enabling each child to receive a truly exceptional start in life. It has become apparent that a public education may be free, but an exceptional education is not. This points to the clear differential between the ordinary and the extraordinary. Accomplishing the extraordinary on behalf of our children and their futures motivates every goal the Foundation sets and achieves.

Currently, SMSF works to raise over \$2,000,000 annually. In a spirit of partnership these resources are provided to the San Marino Unified School District (SMUSD). The district allocates the funds in ways that will have the greatest impact on educational excellence at each school and in the district as a whole.

Recognizing the importance of close relationships between successful schools and their communities, the Foundation also works to build strong ties of support and engagement with parents, businesses, and residents alike.

This effort has worked! Over the past fourteen years SMSF has helped SMUSD establish a valuable legacy as the top-ranked public school district in California.

Of course, change never ceases and excellence never rests. This year's annual report highlights exceptional programs across the district which offer extraordinary educational opportunities to prepare our children for the changes they will see in their lifetimes.

為孩子們提供優質的教育

如今聖瑪利諾學校基金會SMSF的角色已經逐漸發展成為學區品質的領導者。它不斷尋求讓我們的學校擁有更卓越的教學品質使每個孩子都能夠在人生的道路上有一個好的開始。公立教育可能是免費的但優質教育不是。我們希望明確地指出在教育品質上普通與卓越之間有多麼的不同。為孩子們提供優質的教育和充滿希望的未來是基金會設定和達成目標源源不斷的動力。

目前，聖瑪利諾學校基金會每年籌集的款項超過200萬美元。每一位為聖瑪利諾聯合學區（SMUSD）提供援助的人就是學區發展的合作夥伴。學區把這些經費和資源合理地分配到需要的地方，持續為區內的每一所學校和整個學區的高品質教學提供了保障。

我們清楚地認識到優質學區裡的學校與社區之間保持緊密關係的重要性因此基金會一直致力於與社區內的家長、企業和居民建立和保持良好的互動以獲得他們的大力支持 and 積極參與。

這些努力已經取得了很好的成效。在過去的十四年裡聖瑪利諾學區在基金會的幫助下成為加州頂尖的公立學區這已成為一個寶貴的傳統。

當然保持卓越需要不斷努力地面對新的變化和挑戰。今年的年度報告裡包含了學區內豐富多彩的教學項目讓孩子們所獲得的高品質教育將讓他們受益終生。

請登入www.smsf.org 官方網站獲取本年度報告的完整中文譯本。

Opposite Page Financial Data Sources:

United States – National Education Association May 2018 Research, Revenue Per Student in Fall Enrollment 2017-2018
California – California Department of Education, School Financial Services Division, www.ed-data.org. Per student amount includes LCFF revenues, federal revenues, and other state revenues per student (based on reported student enrollment).

SAN MARINO SCHOOLS FOUNDATION
Empowering Excellence.

ELEMENTARY SCHOOL

STEM

NEW THIS YEAR, elementary stem seeks to make scientific ideas and principles accessible to our youngest minds and to establish a lifelong pattern of curiosity, exploration, problem solving, and innovation.

STEM — an acronym for Science, Technology, Engineering, and Mathematics — helps our grade-school students see science in the world around them. Collaboratively implemented by teachers Nickie Oh and Crystal Shin, the program initiates students' examinations of the universe with observations of the everyday objects right at their fingertips, and provides a space where they are free to imagine, create, and build solutions to scientific problems in a laboratory environment.

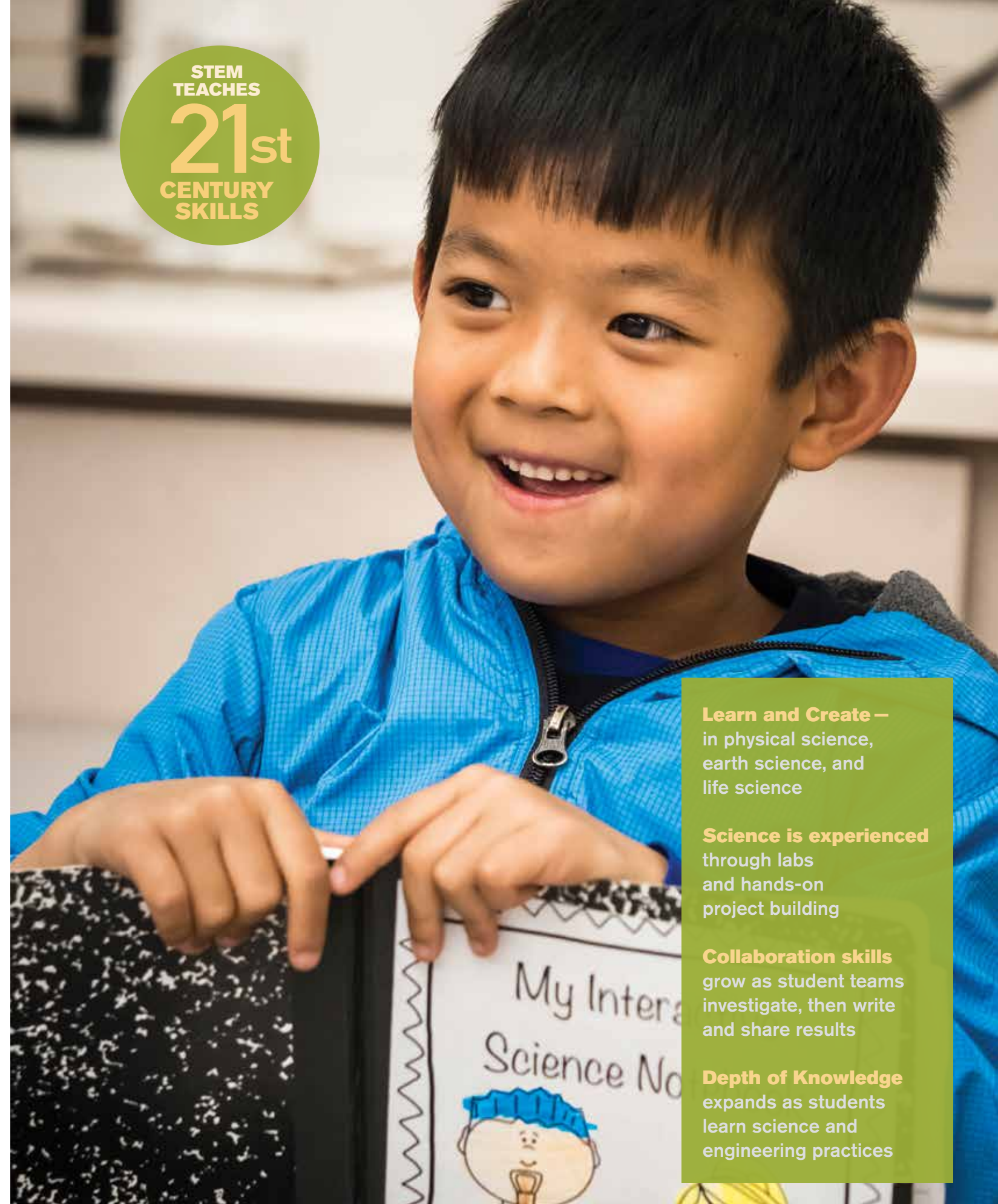
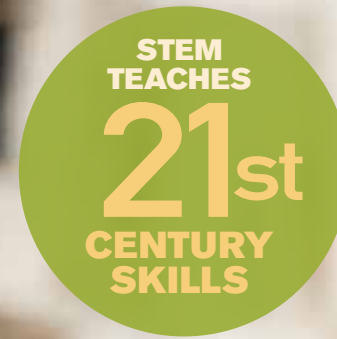
IN THESE STEM LABS, students extend the lessons learned in their general classroom science studies. The nationally-recognized Next Generation Science Standards (NGSS) drive the curriculum. All three strands of the program — physical science, earth science, and life science — are explained and explored as children develop the ability to interpret their observations in a scientific manner. Students research and write about each process, then give presentations in collaboration with their team members.

HANDS-ON LEARNING experiences deepen understanding and comprehension. These fun, engaging activities result in memorable lessons that last. This past school year, students accomplished a variety of projects, including: understanding the science behind windmills, rollercoasters, and bridges, creating animal habitats, hosting a push-pull carnival examining force and motion, as well as designing and building a hurricane tower to withstand strong winds. The Foundation supports the LEGO League competition as an introduction to robotics for those students seeking extracurricular STEM opportunities.



“Elementary STEM teaches students how the world works. It is everyday science where students learn not only the WHAT of science, but also the WHY and HOW.”

— NICKIE OH
STEM Teacher



Learn and Create — in physical science, earth science, and life science

Science is experienced through labs and hands-on project building

Collaboration skills grow as student teams investigate, then write and share results

Depth of Knowledge expands as students learn science and engineering practices



4
SECTIONS
172
STUDENTS
PER YEAR

Art Matters,
it touches everything from
home design to how we
live our lives

Self-esteem rises as
students discover their
creative gifts

**Self-confidence
develops** by mastering
new and different skills

**Outside the box —
thinking grows** as
art education focuses
creativity and innovation



“The arts, more than any other subject, teach children so many skills...they develop creativity, confidence, perseverance, and the ability to problem solve.”

—MICHELLE MACEDO
HMS Art Teacher



MIDDLE SCHOOL

Art

LEARNING TO THINK outside the box is critical to success both in education and in life. Few classes better develop perception, analysis, problem solving, perseverance, imagination, and creativity than art classes do. Students at Huntington Middle School are fortunate to enjoy the artistic gifts, passion, and instruction of Michelle Macedo. Now in her tenth year teaching in San Marino, she recognizes the strengths that the study and practice of art cultivate in her students.

ART TEACHES much more than creative skills in various media; it pushes students to try unfamiliar techniques and to persevere through early disappointments to achieve the self-confidence which comes with success. Such accomplishments establish a new foundation from which a student can reach farther and a place from which to improvise and craft new solutions. While learning new techniques, art students must move beyond their comfort zones, helping them to confront their fear of failure and move forward. These personal insights can be applied across all of life's disciplines.

EACH YEAR over 170 students attend Macedo's classes. These progress from Introduction to Art up to Advanced Art and 3D Art Classes. Media includes graphite to pastel, watercolor to acrylic, plaster to ceramics, as well as glass, and metal. Students also get the opportunity to work with unconventional materials, including: wire, buttons, and pantyhose. The goal: take ordinary, everyday objects and turn them into extraordinary creative works. The result: students equipped with fertile minds and creative ideas who are well prepared to discover imaginative solutions.

Robotics

TITANIUM ROBOTICS, provides a fun and friendly setting where San Marino's students work together to solve technical problems while competing against other high schools. Similar to high-tech incubators, each year FIRST® (For Inspiration and Recognition of Science and Technology) robotics teams around the globe tackle all aspects of operating a small business in an effort to fund and build their robots, which meet on the fields of competition to determine the year's most successful designs.

THE LESSONS LEARNED on Titanium Robotics go far beyond mechanical insights and skills. Each season FIRST® announces the season's objectives and defines the game's rules. In six short weeks the team mobilizes to create a robot, which will be most efficient at winning. Student-led under the guidance of faculty advisors Scott Barton and Keiko Hiranaka, the team is separated into two divisions; the business team which markets, communicates and fundraises, and the engineering team, which plans, designs, fabricates, assembles, programs, and tests the robot. Each year two robots are built, one for testing and practice, the other for competition.

EVERYONE CAN PARTICIPATE. Each year, experienced team members mentor and guide newer members in all aspects of the team's operations, whether preparing designs in CAD, cutting and fabricating structural pieces, installing and wiring electrical components, coding and programming software, or writing marketing materials, and handling press relations. There is a place for everyone and an experienced leader ready to welcome any newcomer. Ultimately, Team Titanium is about much more than learning and applying technology; it's a community that helps students learn the interpersonal collaborative skills that are essential to any successful venture.



“This team is about more than building robots. It's a community. My best friendships have been fostered by being on the robotics team.”

—CHARLESTON WONG
Team Titanium, Co-Business VP, Junior



TITANIUM
ROBOTICS TEAM:
35%
ARE YOUNG
WOMEN



Everybody can participate regardless of prior experience

Mentoring occurs as experienced teammates train new members in all the needed skills

Students do it all by managing both engineering and business details

Interdisciplinary learning — students master a range of engineering, fabrication, and programming skills



With a long history, debate has been part of the Titan tradition since the founding of SMHS

As a competitive forum, debate builds teamwork, raises self-esteem, and a sense of belonging

Critical thinking results as research, writing, and speaking skills focus minds

San Marino wins awards locally, statewide, and nationally every year

DEBATE
TEAM WINS
100s
OF TROPHIES
PER YEAR



“ Debate teaches skills in critical thinking, research, writing, communication, and yet is also a competitive forum for students to build self-esteem, teamwork, and a sense of belonging.”

— MATT SLIMP
Debate Coach



HIGH SCHOOL

Debate

DEBATE IS THE NUMBER ONE extra-curricular activity sought by selective colleges and universities. It is considered a great way for students to round out their resumes. Debate teaches critical thinking skills, research skills, writing skills, and communication skills in a competitive forum where students can build self-esteem, team relationships, and a sense of belonging.

THE DEBATE TRADITION goes back to San Marino High School's founding. The school secured a charter with the National Speech and Debate Association (then known as the National Forensic League) almost the same day its doors opened and has enjoyed a winning history. Current Coach Matt Slimp, who received his second Diamond recognition and won the Southern California Debate League "Coach of the Year" this past season, stands in the shoes of predecessors like King Stuart who successfully led the program for decades.

SAN MARINO REGULARLY COMPETES in four types of debate: Policy Debate where two-student teams debate a US policy position, Lincoln-Douglas Debate where students debate values one-on-one, Public Forum where students discuss a current, newsworthy event that demands action, and Parliamentary Debate where students receive a resolution 20 minutes before the debate, are assigned a side to represent, and have to argue the case relying on their knowledge of the subject and debate skills alone.

OUR TEAM MEMBERS make success happen. The team, which typically numbers between 80-90 members, competes in over 25 tournaments a year. About a third of the team goes on to compete in regional, state, and national tournaments as well. In the process of pursuing their passion for debate, the team's students have earned hundreds of trophies each year and are recognized nationally for their excellence.

HIGH SCHOOL

Link Crew



“The transition to high school can be challenging. Link Crew offers freshmen a warm welcome, an interactive orientation and a year of special events to build a solid foundation.”

—LAURA IVES
Link Coordinator

IT'S A COMPETITIVE WORLD. High school students experience stress as they look toward the college application process and beyond. Such pressures, particularly at academically challenging high schools, can result in anxiety and depression. Link Crew, a national program with a twenty-four year track record of success, now in its third year in San Marino, aims to combat this by guiding freshmen and new students through their first year on campus and helping them to establish new friendships.

LINK CREW LEADERS welcome students new to San Marino High School. Besides making the transition from middle school successful, Link Crew also strives to make every incoming student feel their value as a member of the Titan family.

THREE TRAINED and certified adult coordinators, Laura Ives, Courtney Rushing and Robbin Rae McCulloch direct the program. Link Crew is made up of junior and senior volunteers who undergo a three-day training process to prepare for Orientation. At a half-day orientation experience, marked by fun, positive team-building exercises, these upperclass leaders are paired with approximately eight incoming students. Workshop discussions focus on the responsibilities, choices and challenges of high school life. The morning wraps up with a campus tour, registration support, and a group lunch.

OVER THE COURSE of the year, special monthly lunchtime activities keep each crew linked together, while leaders also take time to send notes, texts, and invitations to school events to each of their crew members, keeping them connected to the campus community.



LED BY
75
STUDENT
VOLUNTEERS



The transition to high school is challenging for most students

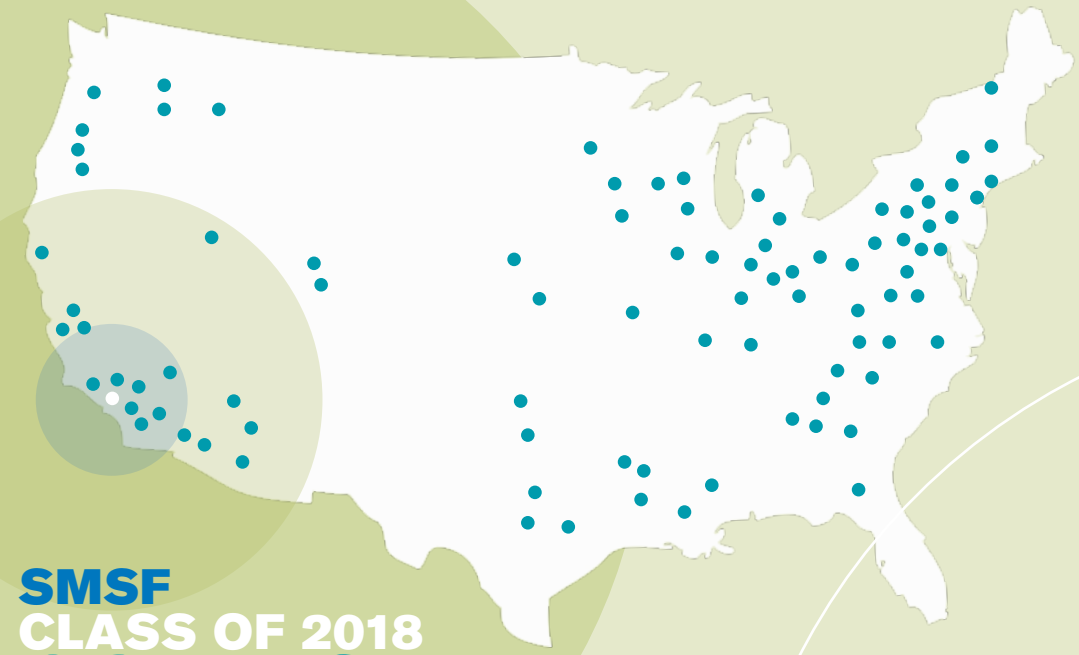
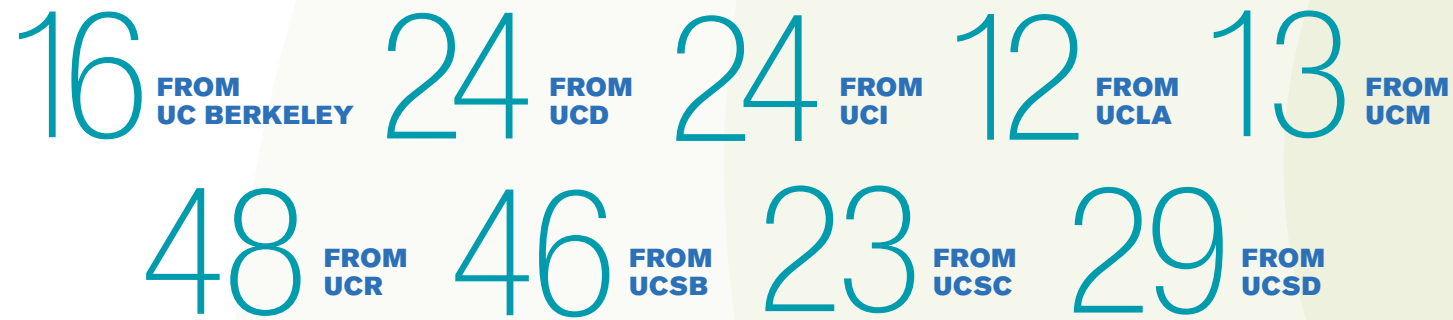
Welcoming and incorporating incoming students is the goal

Student leaders attend a three day orientation process

Juniors & Seniors are paired with freshmen and new students

Enthusiasm for the program attracted 100 more volunteers than needed this year

San Marino graduates received 235 offers from UC campuses including



SMSF CLASS OF 2018 COLLEGE DESTINATIONS

- Arizona State University
- ArtCenter College of Design
- Auburn University
- Baylor University
- Bellevue College
- Biola University
- Boston University
- California Institute of Technology
- California Lutheran University
- California Polytechnic State University San Luis Obispo
- California Polytechnic State University Pomona
- California State University Long Beach
- California State University Los Angeles
- California State University Monterey Bay
- California State University Northridge
- California State University San Marcos
- Carnegie Mellon University
- Chapman University
- Choate Rosemary Hall
- Citrus College
- Colorado School of Mines
- Columbia University
- Creighton University
- Drexel University
- Emmanuel College
- Fordham University
- Georgia Institute of Technology
- Gonzaga University
- Hamilton College
- Harvard College
- Haverford College
- John Cabot University
- Kenyon College
- Lawrence University
- Lewis and Clark College
- Loyola Marymount University
- Marymount California University
- Massachusetts College of Pharmacy and Health Sciences
- MiraCosta Community College
- New York University
- Northwestern University
- Oberlin College
- Parsons School of Design
- Pasadena City College
- Pennsylvania State University
- Pepperdine University
- Pratt Institute
- Purdue University
- Rensselaer Polytechnic Institute
- Rhode Island School of Design
- Ringling College of Art + Design
- Rose-Hulman Institute of Technology
- Saint Mary's College of California
- San Francisco State University
- Santa Barbara City College
- Santa Clara University
- Seattle University
- Siena College
- Skidmore College
- Southern Methodist University
- St. Joseph's College
- Stanford University
- Syracuse University
- Texas Christian University
- The Los Angeles Film School
- The New School
- Trinity College
- Universidad Europea de Madrid
- University of Arizona
- University of California Berkeley
- University of California Davis
- University of California Irvine
- University of California Los Angeles
- University of California Riverside
- University of California San Diego
- University of California Santa Barbara
- University of California Santa Cruz
- University of Chicago
- University of Colorado-Boulder
- University of Illinois
- University of Iowa
- University of La Verne
- University of Michigan
- University of Minnesota
- University of Mississippi
- University of Nevada
- University of Oregon
- University of Pennsylvania
- University of Pittsburgh
- University of Puget Sound
- University of San Diego
- University of San Francisco
- University of Southern California
- University of the Pacific
- University of Wisconsin-Madison
- Utah State University
- Valparaiso University
- Washington State University
- Washington University
- Wellesley College
- Westmont College
- West Point — USMA
- Whitman College
- Whittier College
- Willamette University

San Marino graduates who went on to higher education

96.96%

Offers received from colleges and universities worldwide

1,095

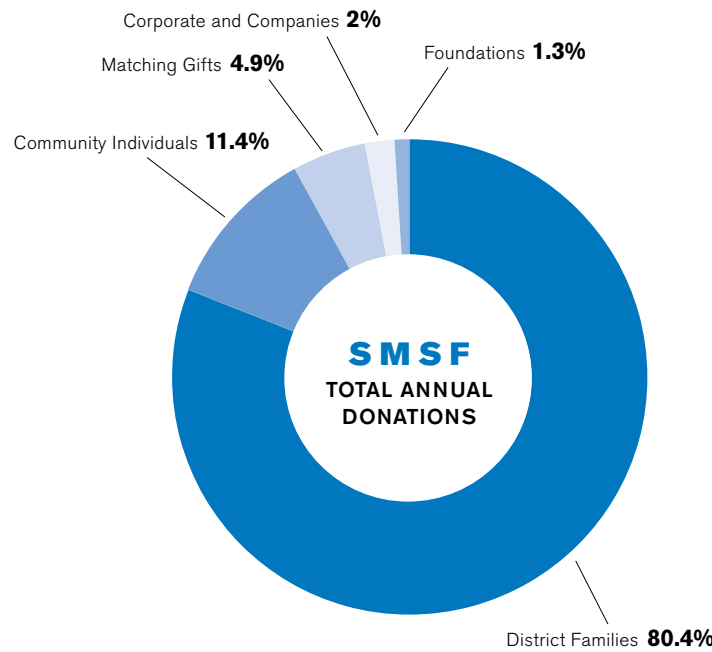
951
AP TESTS TAKEN

SAN MARINO GRADUATES RECEIVED 9 OFFERS FROM IVY LEAGUE COLLEGES

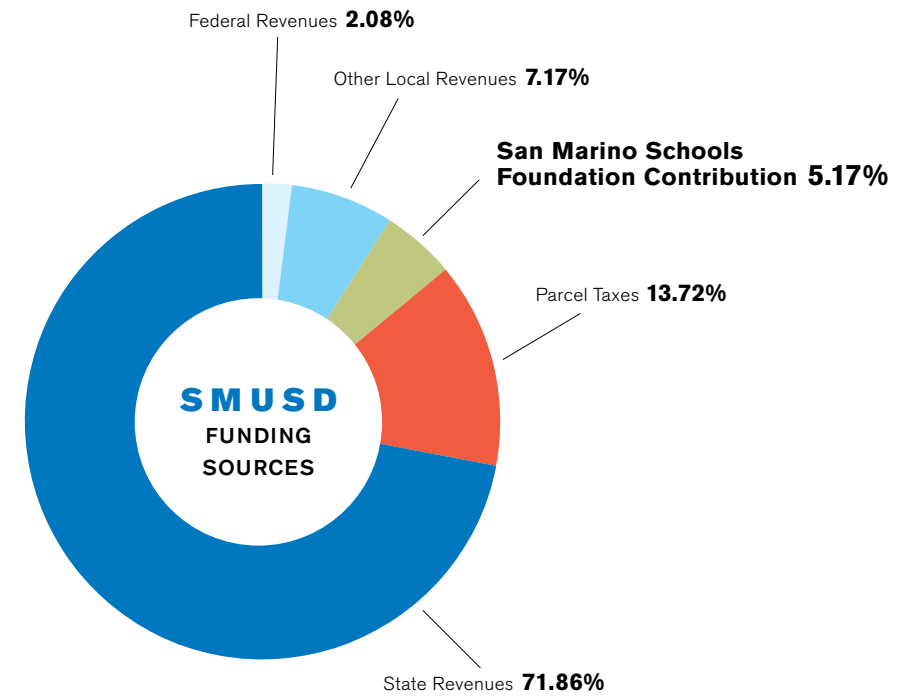
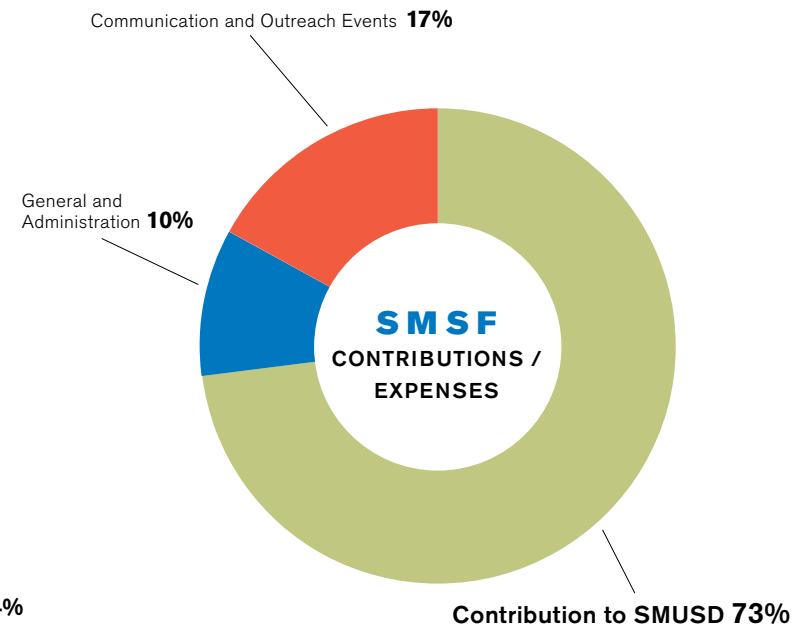
FINANCIALS

2017-2018 IN A SNAPSHOT

Support, Comparison, Impact



Total 2017-2018 Annual Campaign Donations
\$2,502,084.93



Total 2017-2018 Funding
\$41,543,661



TEACHERS SUPPORTED



ACROSS ALL CAMPUSES

STATEMENT OF FINANCIAL POSITION

June 30, 2018 (Unaudited)

ASSETS:	6/30/18
Cash and Cash Equivalents	\$ 5,781,939.83
Endowment Fund	\$ 3,601,342.47
Total Assets	\$ 9,383,282.30

LIABILITIES AND NET ASSETS:	6/30/18
Liabilities	\$ 0
Net Assets	
General Fund	\$ 97,085.97
Major & Designated Gifts	\$ 3,968,039.01
Memorial Fund	\$ 4,186.87
Endowment Fund	\$ 3,323,808.81
Retained Earnings	\$ 128,599.49
Total Net Assets:	\$ 9,383,282.30
Total Liabilities and Net Assets	\$ 9,383,282.30

SAN MARINO SCHOOLS FOUNDATION
Empowering Excellence.

NEW IN 2017-18



GRANT FUNDED INITIATIVES

The San Marino Schools Foundation practices full transparency. Audited financial statements are available on our website.

Thank You



WE ARE ALL SCIENTISTS. Today's world requires it. The curiosity, inquiry, reasoning and problem solving which define the scientific approach are required in all fields of endeavor. In the San Marino Unified School District we promote these requisite, rigorous skills across all disciplines, from the sciences to the humanities.

RECENTLY, A PARENT AND FORMER CALTECH PROFESSOR told me that many of their graduates receive job offers in business and finance after earning a scientific degree. This is, in part, because a curious mind, combined with critical intellect, is a valuable commodity regardless of the chosen profession. In San Marino we strive to teach our students the higher level thinking skills which will provide the foundation for their future success. We do this through high-level classroom instruction and expansive programmatic offerings in the arts, sciences, humanities, and athletics.

THIS YEAR SMUSD SENDS FOUR STUDENTS TO CALTECH, a school which selects fewer than 300 incoming students worldwide. I have no doubt that these graduates, and all of our Titans going out into life, will utilize the scientific foundations of curiosity, inquiry, reasoning and problem solving taught here throughout their academic and professional careers.

THE WORK WE DO IN SAN MARINO IS SECOND TO NONE and would not be possible without the support of our San Marino Schools Foundation and the many people like you who empower our continual innovation and excellence. It requires our entire community to make such successful lives possible. I thank you.

With Gratitude,

Alex Cherniss, Ed.D.
Superintendent of Schools
San Marino Unified School District

COMPASS



Own your tomorrow.



Our Donors

The San Marino Schools Foundation thanks all of the following donors for contributions received from July 1, 2017 to June 30, 2018.

CORPORATE AND ORGANIZATIONAL DONORS

The San Marino Schools Foundation is proud to welcome our newest corporate sponsors: California American Water, Compass California, Inc., and Flex College Prep.

GOLD SUSTAINER \$10,000 or more

Chinese Club of San Marino
Compass California, Inc.
Rose Hills Foundation
San Marino Rotary Foundation
Spring Arts Tower, Inc.

SILVER AMBASSADOR \$5,000 to \$9,999

Boston Private Bank
California American Water
Charles Schwab & Co. Inc.
East West Bank
Flex College Prep
The Hoffman Foundation
Rusnak Auto Group
TMSmiles

PARTNER \$3,500 to \$4,999

Portfolio/KW Realty
Peter Ly MD Family Foundation
Post Alarms Systems

SPONSOR \$1,000 to \$3,499

Tony M. Chang,
Esquire Law Firm & Realty
Fletcher Jones Foundation
The Thornton Foundation

FRIEND \$500 to \$999

Opus Community Foundation

CONTRIBUTOR Up to \$499

Blue Shield of California
California Community Foundation
Pasadena Community Foundation
P.E.O. Chapter NA – San Marino

SCHOOL FAMILY AND COMMUNITY DONORS

GOLD SUSTAINER \$10,000 or more

Shauna & John Barger
Jim Barger
Shwu-Nuo Huang
& C. Joseph Chang
Kristin & Greg Chapman*
The Havner Family Foundation
Mei Zhang & Yu Hu*
Danica & Mark Hughes*
The Hurt Foundation
The Jiggins Family*
Lisa & Dave Link
Wendy Hsu & Calvin Lo*
The Ma Family*
Miller Living Trust
Shawna & James Phelan*
Evette & John Ramsay
The Repetto Family*
Stephen Rogers
Sue & Steve Silk
The Simpson Family
Yolanda & Jordan Sollitto*
The Song Family*
The St. Geme Family*
Huiyong Shi & Haiying Wang

SILVER AMBASSADOR \$5,000 to \$9,999

Jennifer & Chris Allen
Mr & Mrs Sean A. Andrade
Jo Jeanne & Dann Angeloff
Jennie A. Sievers
& Richard F. Anthony*
Drs. Alexis & Madhu Anvekar*
Kelci Ng & James Bai*
Karen & Rob Barrett*
The Bilvado Family
Annie & Paul Brassard*
Amy & Jules Buenabenta*
The Burt Family*
Michele & Brett Canon*
Kelley & Andy Carpiac*
Jan & John Cate*
Charcie Chan's Family*
Annie Han & Hunter Chang*
Tina Siu & Winston Chee Family*
Boren Chen*
Mr Alan Chen
& Ms Yvonne Cheng*
Yvonne & Raymond Chen*
Erica Cheng*
Xiaohong Cui & Xiaolu Cheng*
Cecile & Jeffrey H. Chiu*
Jane & John Chon
Kathy Wu & Jack Chou*
Luyi Khasi & Shawn Chou*
Jennifer & Alan Chuang*
JiJi Park & Jason Chung*

The Clougherty Family*
Zeina & Imad Daoud*
Laura & Norman L. Doerges*
The Dugally Dahlman Family*
The Duvall Family*
The Esbenschade Family*
Julie & Nicolai Foong & Family*
Karen & Jonathan Fu*
Demi Fu*
Nicolette & Jay Fuerst*
Catherine & Daniel Giddings*
The Gould Family*
Joelle & Ben Grossi*
The Harris Family*
The Herman Family*
Tracy & Richard Hirrel
Charlie Ho*
Jennifer Ly & Jason Ho*
Rebecca Cong & Soi Hoang
John Hong & Amy Zhang*
Lauren Lim & Jeffrey Hong*
Mr. & Mrs. Barry Hou*
Lee & John Hsiao
Yuka & Toby Hsieh*
Joni & John Hsu*
Hui Ling Huang*
Janice Wong & Ying Hsien Huang*
Elizabeth Kay-Im & Eastwood Im*
Maribel & John Incontro*
Qifang Yang & Hezhong Jin*
Jennifer & Kyu Kang*
Dr. Sri Abboty
& Dr. Ramesh Kesavalu

Walter Khaw & Elaine Khaw*
Stefanie & Michael Killackey*
Yuin Kim Family*
Liz & Dennis Kneier
Nancy & Jonathan Ko
Patricia & Shawn Ko*
Sylvia & Peter Koh*
Allison Yim & Michael Kwok*
Vivien Lok & Daniel Law*
Michiko & Ming Lee*
Milou & Peter Lee*
The Li Family*
Xueying Zheng & YiJun Li*
Ye Li's family*
Ying Zhou & Wei Li*
The Lian Family
The Lichtman Family*
Joyce & Richard Lin*
Joy & Matthew Lin
Emily & Stephen Linden*
Sherlene & Alvin Loo*
Lulu & Gabriel Lopez*
Sara Lin & Rock Lu's Family*
The Maling Family*
The Manibog Family*
The McCrary Family*
The Merryman Family*
Alison & Erik Moller*
Pauline & William Montelongo*
Grace Ting & Raghu Murthy*
Sue & Issa Nesnas
Buck & Judy Newell
The O'Mara Family*

Jennifer & Steven Park*
The Pedroza Family*
Carmen Peng*
Christina & Matthew Pink*
Beiwen Tan & Yucheng Qian*
Mei Mei & Jiang Qiu
The Raymond Family*
The Rodgers Family*
Sarah & Jason Rome
The Winnie Zhang Family*
Kim Siegmund & John Ryan*
Enny & Vincent Samara*
Anna Regalado
& Miguel Sandoval*
Corinna Wong & Roger
Satterthwaite*
Janice & Jay Segimoto*
Lisa & Tim Sloan
Shannon & Kevin Snaer
Vicki & Douglas Strugar*
The Su Family*
Linda Hui & Hal Suetsugu*
Celia Sun*
Angela & Victor Sze*
The Talt Family*
Tiffany & James Tang*
Victoria Du & Liming Tang*
Jenny & Le Tran*
Andy & Christine Tran*
Zhihua Li & Tu Tran*
Jasmin & Tony Tsai*
Alice Song & Scott Ulrich*
Beatrice & Hung Van*

*Honor Roll: \$2,500 – 2,999 per student enrolled in the District *High Honors: \$3,000 or more per student enrolled in the District



Major corporate sponsors and individual donors are recognized by banners displayed along Huntington Drive.

The Walsh Family*
 April Niu & Peng Wang*
 David S. Wang & Rosemary Lay*
 The Wang Family*
 Wang & Liu Family*
 The Wendling Family
 Evelyn & Mark Wildeman*
 Daisy & Jon Wilson & Family*
 Wanda Chan & Chris Wong
 Vivian & Peter Wong*
 Fengcen Xiao*
 The Yague Dewitt Family*
 Wendy & Lawrence Yang*
 Fary & Rich Yassamy*
 Aidan Yau's Family*
 Amy & Mark Yee*
 Tim & Christin Yoo*
 Jocelyn Go Young
 & Johnny Young*
 Kimi Tamura & Ted Yu*
 The Zhang Family*
 Jenny Ni & Harvey Zhang*
 Jessica & Jimmy Zhang*
 Ruiyan Wu & Tang Zhang*
 Yanyan Shao & Xin Zhang*
 The Yanfeng Zhao Family*
 Jianfang Zheng*
 Xuemin Liang & Junheng Zhou*

Homeira & Mehdi Asghari*
 Coleen & George Ball
 Alma & Mark Banuelos*
 Claudia & Richard Boles
 David Brougham
 & Cathryn Brougham
 Kathleen & James Brown
 The Bruno Family*
 Annie Chen & Jianfen Cai*
 Fengxiang Cai*
 Susan & John Caldwell
 Margaret Caldwell*
 The Cameron Family Trust
 Mark Carroll
 The Pott/Carver Family*
 Jan & John Cate
 Michelle & Michael Chai*
 Ophelia Chen & Kevin Chan
 Cyndie Chang & Philip Cheng*
 Jennifer & James Chang*
 Ariel Lee & Daniel Chang*
 Julie Yen & Michael Chang*

Mr. & Mrs. Jim Chang
 The Chen Family*
 The Chen Family*
 Felen Wu & Eric Chen
 JiHong Li & GuoQing Chen*
 Lisa Pan & Dave Chen*
 Alison Chen & Hsiaowen Chen
 Wei Wei & Hsin Chien Chen
 Tao Chen
 Vincy Yu & Andy Chen
 Alice & Michael Chen
 Rosangela & Ray Chen
 The Chen Family*
 Chia-Ling Chen & Ted C. Cheng*
 Sandy Lai & David Cheng*
 Judy & Gilbert Cheung*
 Sharon & Bill Cheung
 John Chiang & Elsie Wu*
 The Chien Family*
 The Chou Family*
 Toby & Michael Chou
 Lynn Lu & Tom Chow*

Annie & Bill Chui
 Shirley & Martin Chui
 James Connelly, Class of 1958
 Mr. & Mrs. Joseph R. Conzonire*
 Melinda Cronk*
 Gabriela & Don Crowell*
 Zhiwei Tian & Hong Dai*
 Jennifer & Sid Danenhauer
 Jimmie Dang*
 Cezhong Deng's Family*
 Wei Deng*
 Winona & Andy Deng
 Linda Silveira
 & Raymond Deshaies*
 Xinhui Fu & Jiwei Dun
 Qing & Kyle Duncan*
 GGE Foundation, Inc.
 Daisy Feng*
 Chen Zheng & Lei Feng*
 Pauline Woo & Francis Fong*
 Maggie Fu*
 Yanhong Shen & Luwei Geng*
 Mark & Jennifer Giles
 Ann & Rob Gluck
 Julia R. Greer
 The Gutcho Family*
 Sophia & Patrick Hallet*
 Juliana Chen-Hang
 & Andrew Hang
 Daphne Stewart & Matthew Hart*
 Lina & Glenn Hatfield
 The Wei He Family*
 Cody Heard Family*
 Allison Hill
 Nancy & Paul Hittner*
 Christina Chu & Samuel Ho*
 Linda Tieu & Andy Ho*
 The Hogle Family*
 Genevieve & Miron Hom*
 Kaoru & Daniel Hong
 Ashley & Steve Hsiang*
 Ryan Hsu & Lily Kao*
 The Hsu Family*
 Fan Hsu*
 Christie Chu & Richard Hsueh*
 Lirong Hu*
 Fang Wang & Xuhong Hu
 Carol & Frank Huang*
 Kara & Paul Huang*
 Priscilla & York Huang*
 Vicky & Tony Huang
 Juliana Ng & GanChong Huang*
 Lydia & Stephen Huang
 Vincent Huo's Family*

Lina & Jeffrey Jasper*
 Karen & Robert Jeffries*
 Emma Jiang
 Karen Wu & Weilin Jiang*
 Kelly Jin & Paul Jin
 Mr. & Mrs. Zhiyuan Jing
 Linda Johnson Roesch,
 Class of 1958
 Jane Chen & Jerry Kang
 Engy Gawish & Dr. Samer Khaled*
 Katherin & Caleb Kim
 Hyewon & Ilho Kim*
 Suzie & Stephen Kim
 Nina & Todd Kirkendall-
 Portfolio/KW Realty*
 Alice Chiang & Norman Ko*
 Dr. & Mrs. William
 & Margaret Ko*
 The Ku Family
 Kristy Ho & Michael Kuo
 Martin Kwok & Katherine Lam*
 The Lagos Family*
 Ellen & Joey Lai*
 Irene Gaw Lai, MD
 & Yoon Kevin Lai, PE, PLS
 Tiffany & Roger Lai*
 Chien Fu Lai
 Kevin Lam
 Albert & Pearl Lee*
 Eric & Suzie Lee*
 Mary & Tom Lee
 Juliann Kwak Lee & Charles Lee
 Mei-Hui Su & Woh-Jer Lee*
 Cynthia Chen & Susik Lee*
 Michelle & Leo Lei
 Jiyen Shin & Dennis Leung*
 Lili Ma & Jie Li's Family*
 Shetian Liang & Tongan Li*
 Liqun Zhu & Fuping Li*
 Rong Rong Miao
 & Xiu Kang Liao*
 Grace Liu & Benjamin Lin*
 Henry Lin's Family*
 Martin & Stephany Lin*
 The ETC Lin Family*
 Renita & James Lin
 The Lin Family
 Anit Chan & Beng Wong*
 Gloria & Ray Liu*
 Lisa Li*
 Megan Liu's Family*
 Margaret & Stephen Loh
 Lynn Szeto & Raymond Lok
 Sean Ky & Richard Lord

PARTNER
 \$2,500 to \$4,999

Weiyi Xu & Elliot Don Abravanel*
 Luz E. Aguiar & Jose R. Aguiar
 Yoonjung Hong & Sungjin Ahn*
 Margaret & Arthur An
 The Armendariz Family
 Cynthia & Vincent Ary*

*Honor Roll: \$2,500 - 2,999 per student enrolled in the District *High Honors: \$3,000 or more per student enrolled in the District

“**COMPASS** Real Estate is committed to being engaged in the communities in which we serve. Our local goal: to be an involved partner with the San Marino community. By supporting the San Marino Schools Foundation, our children and our schools thrive, and the entire community benefits. We are a global company, yet Compass seeks a place in finding local solutions.”

—BRENT CHANG, COMPASS REAL ESTATE

Compass

Real Estate, the San Marino Schools Foundation's top Corporate Gold Sustainer is new to the Foundation this year. It is led by Linda Chang, a resident since 1972 and a leading agent since 1979, and her son Brent Chang a 1989 SMHS graduate. Their professional lives align with their roles in supporting civic life, as they seek to be life-long partners with both clients and community alike. Whether in real estate or philanthropy, they feel that single transactions no longer suffice. Instead they see long-term, engaged relationships as the key to success for everyone.



Left to right: Sabrina Kong—Annual Campaign Co-chair, Brent Chang and Linda Chang—Compass Realty, and Curt McClam—Annual Campaign Co-chair

“THE RUSNAK Auto Group is very proud to contribute to the San Marino Schools Foundation. It is our great privilege to have served this community for over 50 years.”

— PAUL RUSNAK

The Lovelock Family*
 Jocelyn & Allen Lu*
 Yang Lu*
 Junhui Luo & Huilan Luo
 Xiyue Luo*
 Evelyn Xu & Peter Ly*
 Daphne Liu & Jonathan Ma*
 Audrey & Michael MacDermott*
 Elizabeth & Albert Mak*
 Fiona Mao
 Patricia Tom Mar
 & Harry Mar Family*
 Michelle & Joseph Marcos*
 Katie & Willy Marsh*
 Audrey & Brad McCarthy*
 Allison & Spencer McCroskey
 The McDermott Family
 Colleen & Liam McGuinness
 Jennifer Nguyen & Justin Mi*
 Yazhu Mo*
 Al Moore*
 Sarah & Jeffrey Morris*
 Drs. Margaret
 & Ananth Natarajan*
 Helen Nguyen
 Qionghua Mao & Zhenming Ni*
 The Norberg Family,
 Class of 1958
 Renee & Todd Olson*
 Luisa & Braden Onishi*
 Edward & Nancy Osuch
 The Paek Family*
 Kristin & Chris Pagano*
 Changqing Pan*
 Sharon & Ken Park*
 Zarana & Ash Patel
 The Yanhui Pei Family*
 Kalia & Tres Petmecky
 Connie & Van Pham
 The Pu Family
 Coco Qiu
 The Qiu Family
 Donglai Wang*
 DongBai Han & Geoffrey Ren*
 Haley Rhee's Family*
 The Roblero Family*
 Juliann & Andrew Rooke
 The Ruiz Family*
 Patty & Spencer Sabo
 Stacy & Bert Seow
 Brenda Lam & Kenneth Shao*
 Lauren & Jerry Shen
 Hongzhu Wang & Guoping Shen
 Alice Deng & Eric Shen*
 Lu Chen & Sannan Shi*
 Ying Wang & Zi Yuan Shi
 Katie & Isaac Simon*
 Kate & Peter Sinclair

Lynette F & Frederic Sohl*
 Christine Hyun & Deok Song
 Silvia & Randy Sowell*
 Dana & Ryan Stenwick*
 Emily Stephens*
 Cheryl & Craig Stewart*
 Erna Knolmar & Brian Stoltz*
 Christina & Steve Streit*
 Hong Zhou & Daoshan Su*
 Elena Hsieh & Hao Sun*
 Denise & Steed Sun*
 Mandy & John Sun*
 Mingyu Qu & CaiHe Sun*
 Sophia Sun's Family*
 Kim & Ted Sutherland
 Patricia MacLaren & Phil Swan*
 LeeKam Ha & John Sy*
 Beini Mo & Tony Tang*
 Rosey Liu & George Tao*
 The Taw Family*
 The Teng Family
 The Traceys*
 Huong Pham & Ken Tran*
 Nilar Tsai & Dr. Michael Y. Tsai*
 Jean & Conrad Tseng
 The Tu Family
 Jill & Michael Tully*
 Angela & Marcos Velayos
 Emily & Nathaniel Vitan
 Doris & Adam Von*
 Elizabeth & Alex Voxman
 Shadd Walker*
 Zhengxia Wang*
 Shirley & Michael Wang
 Michele & Zheng Wang*
 Charlotte Wang's Family*
 Feng Xiao & Xin Wang*
 The Wang Family*
 Michelle Wang & Gene Wen*
 Anna Wyckoff Wasef

& Basem Wasef*
 The Wicke Family*
 Weni & Doug Wilson
 Bonnie & Winston Wong*
 Brian & Elsie Wong
 Gloria & Victor Wong*
 Wendy & Jacob Wong*
 Rebekah & Willard Wong*
 James Wong & Sabrina Kong*
 Susan & Webster Wong
 May & Kent Wu*
 Ning-In Chen & Billy Wu*
 XingMing Wu*
 Amelia & Brian Wu
 Janet Li & Jesse Wu*
 Lina & Jim Wu*
 Qingshun Xie*
 Sophie Zhang & Qijun Xing*
 Yi Xie & Jun Xu*
 The Yamamoto Family*
 Kate & Fred Yang*
 Peter Huynh & Alisa Yang*
 The Yang Family
 Zhan Yang*
 The Yang Yong Family
 Yao's Family*
 Chris Yau*
 Mrs. Susie Lee-Yeh
 & Mr. David Yeh*
 Grace Chi & Kenneth Yeh*
 The Yen Family*
 Okgeum Kang & Gilsang Yoo
 Yuki Fang Jin & Hong Wei Yu
 Ying Zong & Biao Yuan*
 Elizabeth & Victor Zhang*
 Sherry Zhu & Fred Zhang
 Yi Zhang & Yunfei Lang*
 Xin Li & HaiQing Zhang*
 Jingjing Zhao*
 QingXian Liu & YiZhou Zhou*
 Angela Liu & Winston Zhu
 The Zhang Family*
 Jing Xiang & TianShu Zou

SPONSOR
\$1,000 to \$2,499

Laura Fry & Scott Altman
 The Amador Family
 Dr. & Mrs. James N. Angeleos
 Anonymous
 Donna & James Balbin
 The Baldocchi Family
 Sherilyn & M. Douglas Barry
 Miranda Liu & Rhet Bear
 Karen & Frank Beardsley
 Diana Casares & David R. Bell
 Richard Bermingham,
 Class of 1958
 Mary Jane Boggs-Barger
 Jim Boitnott & Greg Wong
 Michael & Alexandra Brousseau
 MaryDee & Thomas Buckley
 The Bugbee Family
 Jessica & Jeff Bulgin
 Allison & John Byrne
 Kimberly & Peter Campbell
 Alison & Into Champon
 Yinna Li & Howard Chan
 Joy Wang & Vic Chan
 Darbin & Wayne Chan
 Weiwei & Henry Chang
 Chun-Rong Chang
 Gerald Chapman
 Jenny & Loren Chen
 Ashley & Joshua Chen
 Yin-Fang Chen
 Joy King & Danny Chen
 Nancy & Charles Chen
 Grace Cheng & Samuel Chih
 Carolyn Wu & Jon Chow
 Kaylin & Joseph Chow
 Cheryl & Michael Chu
 Marilyn & Ronald Conzonire
 Tess & Martin Cootauco
 Sally & Christian Datwyler
 Jeff & Diana de los Santos
 Marta Karpinska-Dean
 & Michael Dean

AnnaMarie & Edwin Delos Santos
 Millie & Steve Deng
 Ann & Gene Dryden
 Paula & Kenneth Dunkel
 Linda Duong
 Peter Feng & Bin Zhu
 Suzanne & Robert Flaherty
 Caroline & Dennis Fong
 Angie & George Foo
 Lesley Ford
 Yahong Fu

The Fuan Family
 Carol & Norman Fujitaki
 Alice Tsoi & Stanley Fung
 Glenda & William Gardner
 Mary & John Gilbaugh
 Anne & Sean Gill
 Thomas Goff
 Christine & Anthony Green
 Roberta & Martin Gundersen
 AnnaLiza & Jeremy Hail
 BingYan Li & Jian Han
 The Hancock Family
 Josie & Kieran Hand
 Page & Thomas Haralambos
 Julie O'Reilly & Harold Harrigan
 Brenda & Wilbert Ho
 The Hou Family
 Karen & Oswald Hou
 SiuWai Lo & XiaoMing Hu
 Fiona Huang
 Jean Huang
 Dr. Wally Hui, DDS
 Connie & Wiliam Hung
 Tammy Yi & Tony Hwang
 Phillip Hwang
 Melinda & David Irie
 Wai-Jen & R E Jeffries
 Cindy & Scott Jenkins
 Jeffrey & Goretta Joe
 W. Michael Johnson
 Marie & Louis Jones
 Mimi & Nelson Jones
 The Jue Family
 Susan & Alex Jung
 Shen-Kao Family
 Doris & Kosta Kaporis
 Caroline & Brian Kar
 Steven & Gail Katz
 Howard Kaufman
 Eros Kaw
 Jennifer & John Kelly
 The Ketelaar Family
 Joanne Liu & William Kiang
 Kyung Kim

Dr. & Mrs Paul Kim
 Stevie & Han Kim
 Christina Kim
 Sophie C. & David W. King
 Cheng-Chih Kung
 Tina & John Kuo
 Aiko Fukiage & Naohiro Kurimoto
 Jane & Ted Lai
 Stephanie Yan & Kelvin Lai
 Connie Hong
 Joyce Leckband
 Sharlene Lee
 Ren Leftwich
 Jane & Robert Leizman
 Yvonne & Mark Leung
 Joseph Li's Family
 Wesley Lin & Sara Lee
 George & Amy Lin
 Li Pan & Guotao Liu
 Shunhua Han & Zhonghua Liu
 Ju Liu
 Hozumi Vilma Okamoto & Eric Luk
 The Lumley Family
 Elizabeth & Ho Lung
 Kai Wang & Ji Ma
 Gracie & Mike Matsuda
 Dorothy & Edward McCarthy
 Curtis & Nichole McClam
 Maria & John McClurg
 Janice Lee & Brian McMahon
 Brian & Cindy Metcalfe
 Margot & Mitch Milias
 Caroline Sayers & Brian Miller
 Carrie & Eric Miller
 NingNing
 & Toshiyuki Minamisawa
 The Moffat Family
 Matt Morris & Sharon Lu-Morris
 The Mukherjee Family
 Mitra & Ali Nadim
 Sophie Ngo & Gerard Ngo
 Fei Chen & Charles Norton
 Nan & Ronald Okum
 Harry Olivar
 Debbie & Mihail Papadopoulos
 Bobbie & Babak Parwar
 Dr. Michael & Susan Patzakis
 Michele Patzakis Prappas
 Jill & Rod Perth
 An Trinh & Loi Phan
 Leah Porter
 Susan & Stephen Ralph
 Krishna & Purush Rao
 Parul & Ashish Rastogi
 The Roberts Family
 Sally & David Rodriguez
 The Satomi Family
 Emmons (Janet) Sebenius
 Connie & Mark Sedlacek
 Connie Ma & Jack Shi
 Karen & Daniel Shiggins
 Shirley Shih & Rainer Sieben
 Rosemary Simmons
 Judith & Bryan Smith
 Debra & Brian Spaulding
 Kim & Michael Spindler
 Paula & Bill Steele
 Joanne & Tony Su
 Silu Sun
 Anny Surmenian

Mimie & Gary Tang
 Masako & Richard Teng
 May & Kevin Thai
 Geneva & Charles Thornton
 Winnie To
 Cynthia & Frank Tong
 The Christian Tse Family
 Tai Lee Chin & Jeffrey Tung
 Valerie Casey & Lawrence Uhl
 Nikki Darakananda
 & Kosol Vipapan
 Honoria F. Vivell
 Lisa & George Wang
 Lisa & David Wang
 Teresa Wong & Ray Wang
 Bin Qin & Xuesong Wang
 Jia Zhou & Zhong Wang
 Carol Ann & Stephen Warren
 Valerie & Aaron Weiss
 The Willhite Family
 Jean Bell & Lynn John Willhite
 Vanessa Sun & Jonathan Winarko
 Diana & Eric Wong
 Anita & Terry Wong
 Grace & Larry Wong
 Huieh-Sueih Chan
 & Raymond Wong
 Kimi Suehiro & Tony Woo
 Beverly & Phelps Wood
 Jeri & Tim Wright
 Peter & Chong Hong Wu
 Miriam & Jack Wu
 The Yang family
 Sarah & Eric Miller
 Gayane & Nikolay Yeganov
 Jennifer & George Yessaian
 Sandy Ro-Yim & John Yim
 Elkie & Gary Yiu
 Lauren & Harold Young
 Jing Cheng & Jing Zhang
 Teresa & Jay Zheng
 Ivan Zhong's Family
 The Chongwu Zhou Family

FRIEND
\$500 to \$999

Emile Bayle
 Stacy & Michael Berger
 The Bernstein/Mulet Family
 Sue & Al Boegh
 Julie & Bob Boucher
 Caroline & Robert Bowling
 Carolyn & Dan Broderick
 Maria Janette Cabalinan
 Elene & Robert Chamberlain
 Susan & Stephen Chandler
 Cindy Hsiao & Danny Chang
 Iris Mark & Richard Chau
 Emily & Ted Chen
 Valerie Jinnette & Mike Chen
 Cindy & David Chen
 Ping Jung Tang & Powen Chen
 Missy & Jim Cherry
 Katherine & Richard Chiu
 The Chu Family
 Teresa Chung & Ming Yeh
 Macy Luk & Clement Chung
 Ann Coughlin
 Debi & Greg Cribbs

GIVING & SERVICE
 across Generations



Above photo left to right: Hunter Modean, Laurie Modean, Gene Dryden, Paul Modean, Ann Dryden and Gracie Modean

The Dryden-Modean families have called San Marino home for four generations. Gene Dryden, former Mayor, City Council Member, and Community Church leader began attending school in Kindergarten at Valentine and graduated from then South Pasadena-San Marino High. He completed his graduate studies at Caltech. Ann and Gene's daughter Laurie and son Jim continued the San Marino Schools tradition and attended from Kindergarten through graduation. Today, their grandchildren, Hunter and Gracie, following the same path, are now Titans. Laurie and Paul Modean are both active in school and community with Laurie having served as PTA President at Carver and Huntington Schools and is currently on the board at the high school.

The families agree, "We wish to continue the success and excellence of our children's and grandchildren's education. The strength of the community is our schools, and without everyone's support we wouldn't enjoy the San Marino we know today."

* Honor Roll: \$2,500 - 2,999 per student enrolled in the District * High Honors: \$3,000 or more per student enrolled in the District

Suzanne Crowell
Lynn Finkel & Victor Davila
Barbara & William Day
Sally De Witt
Mona & Scott Delahooke
Belinda Kwan & Ed Dingman
Karla & Steve Domier
The Dosti Family
Karen & Phil Ewen
Jane & David Feinberg
The Fong Family
Cho Pang Fu
Siobhan & Dan Gambito
JiQing Xu & HuiHui Gan
Yuan Yuan Sun & ShunJin Gan
Xiao Hong Gao
Tamara Clare & Jose Garcia
Sonia & Bruce Goldberg
Arti & Sandeep Gupta
Arax Mansourian
& Shahen Hairapetian
Beaumont & Lilly Hall
Mary Lou & Benjamin Hammon
The Hargett Family
Carole & William Hasburn
Mary & Randolph Heartfield
Jennifer & Chris Heckman
Julie & Trenton Hill
Sandra & Sonny Ho
Cathy & David Hughes
Liz & Mike Hollingsworth
Sunju Lee & Young Hong
Su-Lin & Frank Hou
Ming Hu & Linda Huang
Annie & Stanley Huang
Le Min Chen & Qinyu Huang
Deborah & George Huang
Huiqin Zhu & Haihui Huang
The Hui Family
Amber Tsaor & Bill Hui
Mei-Chih Chen & James Hung
Alison & Patrick Jeffries
Caroline Tran & Wencheng Jen
Xin Zhang & Zengfa Jia
Jie Ren & Tao Ji
Emelyn & Robert Judge
Terri & Richard Jue
Kam's Family
Shazia & Salman Khan
Barbara & Gregory Kim
Ching Wen Shih & Shih Wei Ko
Grace Chan & Gerard Ko
Wendy & Scott Kohno
Irene & Philip Lao
Bonnie Ledyard
Amy, Richard, & Princeton Lee

Shirley & Wing Lee
Catherine Pham & Chuck Lee
Michelle Zhang & James Lee
The Leung Family
Claudia Cadavid & Steve Levy
Nancy & Ken Lewis
Liyuan Pei & Shuhe Li
LiWei Wang & Liang Li
Ping Liu & Qiang Li
Xueli Liu & Tony Li
Angela & Raymond Liang
David Liao
Jeannie Kim & Grant Littman
The Weidong Liu Family
Joanne Jiao & Robert Liu
Xiao Hong Gao & Qing Liu
Leh-Nien Loo
Diane & Ed Lukas
Kristie Tu & Minh Mach
Eithne MacLaughlin
Anne & Mike Mallory
Susan & Paul Miller
Eleanor & Myron Oakes
Lynn & Jeffrey O'Grady
Grace & William Origel
Elyse & Steve Paek
Robert & Rita Palmer
Helen & Peter Phan
Shanen & Traverson Prout
Zhenying Qi
Shashikala & Janga Reddy
Rosa Maria Madrigal
& Mario A. Reza
Gail & Stephen Rolfe
Charmayne & Jeffrey Ross
Mina & Trevor Rowe
Susan & Albert Sabo
Ildebrenda & Peter Samson
Kathleen Flaherty Smiley
Robin Ferracone & Stewart Smith
Leanne & Brian Snaer
Yuk Ying & Ting Wai So
Nalini & Uka Solanki
Trevor Spicer
Heather & Andrew Strauss
Jannette V. & Kent Tac Sy
Tanager Housewares
Julie Whang & Michael Thai
Dwight Tobiano
Elena Tolkacheva
James Tolnai
Belinda Hwang & Jim Tung
Nancy & Bob Twist
Gulsah & Ozgur Ustundag
Wanah & Emmanuel Velo
Laura & Michael Villalobos

Patricia & Tom Walcha
Susan & Seth Walworth
Wenhui Zhang
& Huanyong Wang
Sarah Wang's Family
Lynn Huynh & Bruce Wee
Liyuan Pei & Kan Ping Wen
Suzanne & Ronald Wilcox
Margaret & John Williams
Sudarmo & Tien Winarko
Lily Yu-Wong & Kyle Wong
Cecilia & Joseph Wong
Kristina & Raymond Woo
Max Wu
JenJen Yeh & Jack Wu
The Xiao Family
Xia Dai & Qi Xu
Cindy Li & David Xu
Xiaohong Chen & Shuan Xu
Yukari & Yasuhiro Yamaba
Meixiang Xu & Jianjun Yang
Ekitei Yang
Magnolia & Michael Ycasas
Sheila Chau & FoonKit Yuen
Cindy & Michael Yung

CONTRIBUTOR
Up to \$499

Colony & Allan Abbott
Debbie & Tim Agajanian
Susan & Eric Aledort
Ghina & Maher Al-Soufi
Donna & Henry Anding
Anonymous
Richard (Susan) Anthony
Mr. & Mrs. Angelo Antoci
Susan Archibald, Class of 1958
Lynda & Tom Armbruster
Christine & Mark Atkinson
Robin Ferracone & Stewart Smith
Michelle & Larry Wayne Ausbrooks
Katalina Baumann
& Nick Avetisian
Gwen & Guilford Babcock
Suzanne Badawi
Jeremy Baker
Srividya Venkataraman
& Krishnamurthy Balaji
Robert Baldo
Frances & Tridib K. Banerjee
Julie & Jim Barbour
Virginia Barger
Carl D. Barnes
Karla & Danny Barriga
Scott Barton
Eleanor & Ralph Basilio

Joyce & Adli Batnij
Bert Becker
The Beckler Family
Dianna & Kevin Beggs
Christina Benedict M.D.
& Matthew Benedict M.D.
Lee & Fran Benuska
Kimberly & Daniel Besen
Sunita & Manmohan Biring
Caroline & Henry Blauvelt
Elizabeth Bleecker
Anne & Bruce Blomstrom
The Bonavich Family
Ave Maria & William H. Bortz
Dhruba & Ajit C. Bose-Roy
Ann & Richard Boutin
Bonnie & Robert Boyd
Ursula & James Bradshaw
Blanche Bragado
Laureen Chang & Peter Brockett
Jane & Richard Brunette
Sandra & Mike Bruning
Elise Brunner
Kathy Miller & David Bryan
Maureen & Roger Bryant
Edward (Sally) Buckley
William (Betty) Burge
Suzanne & Dale Burger
Dr. James & Emily Burke
Lucinda & Michael Burton
Stephen Buswell, Class of 1958
Pamela & John Buzas
Ana & George Cabot
Graciela Calatayud
Brenda N. Salinas & Aldo K. Cali
Toni & Paul Callahan
Susan & John Campagnolo
Barbara Campbell
Julia & John Carlbom
Michele & Thomas Carter
Rachel & Dwight Catherwood
Richard Cave
Nancy & Martin Chalifour
Priscilla & Wellington Chan
Julie Lee-Chan & John Chan
Cindy & Yuk Chan
Teresa Leung & Andrew Chan
Ling Chang
Julie Li & Tse-Chiang Chang
Young Chang & Yen Yen Sun
Elaina & Tom Chang
Jennifer & Jeremy Chang
Jennifer Chen & Eric Chang
Virgina Chang
Carol Chang
Amy Lee & Ishun Chen

Christine Kuo & Andy Chen
Susan Sheu & Marvin Chen
The Chen Family
Fannie & Vincent Chen
Grace & William Chen
Michelle & Chang Chih Chen
Yueh-Hsiang Yang & Fu-So Chen
Jenny Cheng
Abby & Allan Cheng
Helen & Michael Cheng
Carolyn & Myron Cherico
Lesley & Craig Cheung
Mei-Kuen & Jimmy Cheung
Theresa & Eugene Chiang
Li-Ying Chen & Peter Chien
Christine Wong & Randal Chin
Laverne Ching
Michael Chiu
Della Fong & Albert Cho
Olive & Lope Choa
Hyewon Jo & Inkyu Choi
Alice & Ming Chong
Merian & Shody Chow
Chris (Doris) Christensen
Jeanne & Domanic Chu
Stephen Forman
Andrea & Ken Fox
Helen Franke
Cheryl & John Freiburg
Janet Kiniry & Michael Friedman
Jason Fu Family
Angela & Tony Fu
George Furuta
Maria Villamil & Anthony Garcia
The Gayl Family
Francesca & Leobardo Gil
Catherine Gilmour-Smith
Lilian & Tony Gin
Beverly & Frank Giovinnazzo
Samantha & John Glenn
Petra & David Goldsmith
Goodman Day Care Preschool
Anel & Christopher Gorham
Joe Gorman
Rosemary Diaz
& R. Jeffrey Graham
Anne Blecksmith
& Pierpaolo Granata
Lyena & Jay Griffith
Rene & Daniel Grifka
Su Viswanathan & Gerry Guba
Rebecca Gutierrez
Dr & Mrs Mike Habib
Ziad Haddad & Family
Joan & William Haefliger
Frank & Mary Haltom
Coralie & Dan Handayan
Lyle Bayle & Kenneth Hanf
Kathie & Tony Haralambos
Connie & Dave Harding
Karen & Mike Harrigian
Linda & Donald Harris
Shelley & Thomas Harter
Elizabeth & David Hasbrouck
Ellen & Richard Haserot
Usa & Manny Hassenberg
Corinne & James Hawk
Lynn & Jordan Hayes
Bill & Peggy Heideman
Merrily & Robert Dunlap
Le Tran & Trung Duong

Charlotte & Alfred Edginton
Charlotte Edington
Rocio Fernandez & Stephen Edo
Melinda & Joe Edwards
Juliet & Faizal Emamaullee
Beverly & Arlan Emmert
Janet & Ralph Erickson
Mary & John Erickson
Jennifer & Noel Estandarte
Linda Evans
Olivia & W. Hall Evans
Marlene & Robert Evans
Caroline & Jason Fabbro
The Fagerberg Family
Beverly Falk
Kimberly Fan & Robert Fan
Jeffrey S. Fastnow
The Faure Family
Anne & Victor Fazzi
Diane & Steven Feldon
Andrea & Rick Ferraco
Kathy Flatley
The Folsom Family
Nicole Tzeng & Wei Fong
Stephen Forman
Andrea & Ken Fox
Helen Franke
Cheryl & John Freiburg
Janet Kiniry & Michael Friedman
Jason Fu Family
Angela & Tony Fu
George Furuta
Maria Villamil & Anthony Garcia
The Gayl Family
Francesca & Leobardo Gil
Catherine Gilmour-Smith
Lilian & Tony Gin
Beverly & Frank Giovinnazzo
Samantha & John Glenn
Petra & David Goldsmith
Goodman Day Care Preschool
Anel & Christopher Gorham
Joe Gorman
Rosemary Diaz
& R. Jeffrey Graham
Anne Blecksmith
& Pierpaolo Granata
Lyena & Jay Griffith
Rene & Daniel Grifka
Su Viswanathan & Gerry Guba
Rebecca Gutierrez
Dr & Mrs Mike Habib
Ziad Haddad & Family
Joan & William Haefliger
Frank & Mary Haltom
Coralie & Dan Handayan
Lyle Bayle & Kenneth Hanf
Kathie & Tony Haralambos
Connie & Dave Harding
Karen & Mike Harrigian
Linda & Donald Harris
Shelley & Thomas Harter
Elizabeth & David Hasbrouck
Ellen & Richard Haserot
Usa & Manny Hassenberg
Corinne & James Hawk
Lynn & Jordan Hayes
Bill & Peggy Heideman
Merrily & Robert Dunlap
Le Tran & Trung Duong

Maurino Hernandez
Bob Hesse
Barbara Heublein
Dorothy & Max Hirdler
Jane & John Ho
The Holt Family
Lauren & Jason Hom
Kathi & Robert Horgan
Ann Horton
Kazuyuki & Kayo Hoshino
Grace & Jack Hou
Janie & Gregory Houle
Jackie & Dan Howard
Nicole Lee & TinChuan Hsiao
Meng-Ying Li & Henry Hsieh
Ada & Se-Yao Hsu
Liwen Lien & Chiukao Hsu
Su-Mei Hsieh & Tu-Yun Hsu
Rui Gong & Suisheng Huang
Cindy & Gary Huang
Celia & Samuel W. Hunt
Arlyne & Arlyne Husted
Yen Huynh
Lipin & Steve Hwang
Laura Ives
Susan Jakubowski
Blanca & Jaime Jarrin
Eva Jen
Lu Jiang
Susan & Robert Josenhans
Tailee & Almon Kao
The Karapetyan Family
Grace Wehbeh & Robert Karkafi
Jocelyn Katz
Kathleen Kellogg
Marisa & Bryan Kelly
Florence & Chip Kelly
Anne & Peter Kennedy
J. Darrell (Nancy) Kerckhoff
Josephine Keung
Alice & Ben Khau
Thomas Kibler
Eva & David Ko
Jerry (Kristen) Koiles
Helen & Jacob Kooi
Victoria & John F. Krueger
Ann & Reid Kunitake
Anna & Daniel Kuo
Margaret Kurohara
& David Kuwabara
Marla Felber & Raymond Kwan
Christopher & Valerie Yee
Tan Ling Hon & Kin Wan Lai
Sunee Asavajaru
& Athinop Laibangyang

Helen Lambros
Yan Zhu & Yon-Fu Lan
Jenna & Cesar Larriva
Martha McInnes & Albert Lazzarini
Oliver Le's Family
Lisa Nguyen & David Lee
Amy & Paul Lee
Pearline & Roger Lee
Alice Lee
Kahn Lee
Jessica Wong & Eric Leung
Krista Wong & Alex Leung
Colleen Levy
Elisa Lau & David Lew
Lorraine
& Michael Lawrence Leyva
Emily Su & Xiang Li
Qiqin Yan & Shiyi Li
Tiffany & Wesley Li
Angela & Eric Liang
Tina Chang & Kevin Liao
Lily & Thomas Liao
Lie Djing Lie
Leyen & Dennis Lim
Mr. & Mrs. Christopher Lim
Mia & Ethan Lin
Berry Chan & William Lin
James Lin, Sr.
Julia & George Lin
Cheryl & Chung Lin
Debby & Stephen Lin
Jennifer Chen & Michael Lin
Jia-Hui Chen & Yong-Jian Lin
Denice Lindahl
Tim & Marguerite Lindsay Family
Wai-Ching & Ping Lit
Qin Zhou & Fusheng Liu
Ping Dong & James Liu
Vanh Chang & Henry Lo
Ai-Li Chang & Steve Lo
Leslie & T. Patrick Long
The Ung-Lortz Family
Connie & Raymond Louie
May Lam & Y.K. Low
Mary Kate Lowe
Thomas Loynd, Class of 1958
Ann & David Lozano
Genevieve & John Lucas
Miranda & Steven Lui
Lynn & Bendly Lundgren
Vida Zhang & David Luo
Ailinh Lam & Hoi Van Luu
William & Jane Lynn
The Robert Lytle Family
Laura Macdonald

Susan MacLaughlin
Wendy & David Mak
Donna & William Mann
Norma & Alex-Iskandar Mardelli
Dana & Michael Marevich
Jeanette & Christopher Martin
Carol & Robert B. Marver
Pearline & Roger Lee
Alice Lee
Kahn Lee
Jessica Wong & Eric Leung
Krista Wong & Alex Leung
Colleen Levy
Elisa Lau & David Lew
Lorraine
& Michael Lawrence Leyva
Emily Su & Xiang Li
Qiqin Yan & Shiyi Li
Tiffany & Wesley Li
Angela & Eric Liang
Tina Chang & Kevin Liao
Lily & Thomas Liao
Lie Djing Lie
Leyen & Dennis Lim
Mr. & Mrs. Christopher Lim
Mia & Ethan Lin
Berry Chan & William Lin
James Lin, Sr.
Julia & George Lin
Cheryl & Chung Lin
Debby & Stephen Lin
Jennifer Chen & Michael Lin
Jia-Hui Chen & Yong-Jian Lin
Denice Lindahl
Tim & Marguerite Lindsay Family
Wai-Ching & Ping Lit
Qin Zhou & Fusheng Liu
Ping Dong & James Liu
Vanh Chang & Henry Lo
Ai-Li Chang & Steve Lo
Leslie & T. Patrick Long
The Ung-Lortz Family
Connie & Raymond Louie
May Lam & Y.K. Low
Mary Kate Lowe
Thomas Loynd, Class of 1958
Ann & David Lozano
Genevieve & John Lucas
Miranda & Steven Lui
Lynn & Bendly Lundgren
Vida Zhang & David Luo
Ailinh Lam & Hoi Van Luu
William & Jane Lynn
The Robert Lytle Family
Laura Macdonald

Grace H. Palenik
& Geoffrey Palenik
Cher Palisoc
Lorraine Clearman
& A. James Panos
Miho & Jingyu Park
Leah Pastis
Linda Massey
& Arthur Pastre
Gisele & William Patrick
Charles Patterson
Mary & William Payne
Jan & Richard C. Pearson
Sarah Perry
Regina Wong
& Richard Phillips
Tonia & David Pierce
Katherine & Salvatore Piscopo
Carolyn Platz
Mariana & Charles Plott
Adriana & Raymond W. Porter
Mae Powell
Martha & Gene Powell
William Prappas
Sheila & Cary Present
Robert & Ann Proctor
Wendy & Timothy Pylko
Barbara Hon & Andrew Quach
Hew Quon
Mary Chen & Raymond Rath
Barbara Raymond
Melissa Raz
Sylvia & Andrew Rea
Lorna & Charles Reed
The Regan Family
Judy & Ben Reiling
Winslow C. Reitnouer
John Rellos
Elizabeth & Benigno Reyes
Mary & Edward Riegler
Erika & Kenneth Riley
Patricia & Francisco Rincon
Jud O. Roberts
Barbara Robertson
Iris & Robert Robin
Loretta Hultman & Saul D. Roe
Alex & Elena Rojas
Gretchen Shepherd Romey
& Michael Romey
John Rong Family
Marilyn & Alan Rose
Catherine Falk-Rothchild
& Maynard Rothchild
Harriett & Alfred Rothschild
The Telleria-Ruiz Family
Anne Ryan

“FLEX COLLEGE PREP cares about the future of San Marino students and has been helping students achieve their dreams since 2001. At FLEX College Prep, we know how important it is for student’s to have a vision for their future. We are proud to support San Marino Schools Foundation in its mission to support our community’s students.”

— FLEX COLLEGE PREP

“CALIFORNIA American Water is proud to support San Marino Schools and their continued efforts to inspire excellence. Congratulations to the San Marino Schools Foundation and their efforts to protecting and preserving a legacy of excellence for all current and future students in San Marino.”

—CALIFORNIA AMERICAN WATER

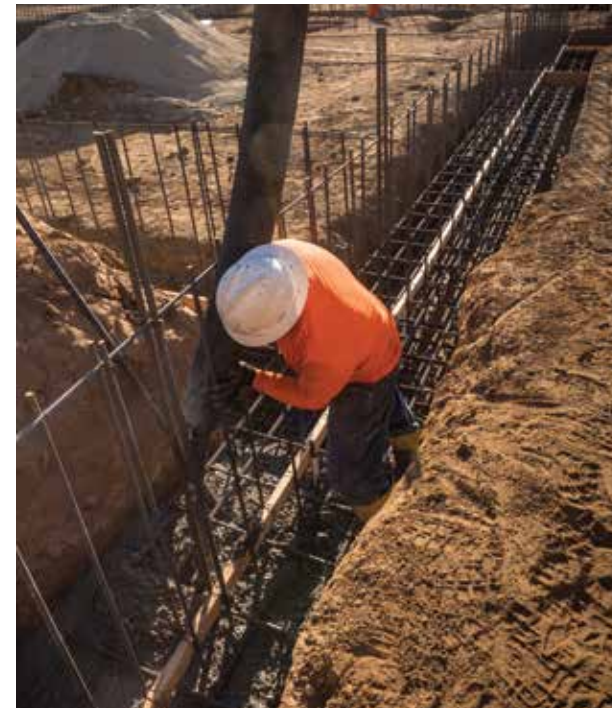
Cindy & James Sabin
 Debra & Alfredo Sadun
 Nancy & Nicholas Saggese
 Kathrina & Munesh Sakhrani
 Cecilia Dominguez Salgado
 & Luis Salgado
 Patricia Salvaty
 Patricia & Thomas Santley
 Linda & Herman Sardjono
 Lorraine & Joseph Saunders
 Cheryl & James Saxton
 The Scannell Family
 Lisa & Lawrence Schall
 Gwynne & Fred Seares
 Doris & Hervey Segall
 Ellis Seligman
 Rose Semain
 Lillian Kao & Dan Seto
 Yvette & Eugene Shing
 Clyde (Jean) Shives
 Melissa & Matt Short
 Linda & Edward Shuey
 Alice Shulman
 Jeanette Hsieh & Johnson Shyong
 The Siddiqi Family
 Diane & Youn Sim
 Alison & Dennis Slattery
 Elizabeth Ferry & John Slocum
 Sheila & Tim Smith
 Patti Smith
 Karen Smits
 Linda & Howard Speil
 Sue Spence
 Helen & Mark Spitzer
 Sarah & William Steier
 Millie & Alan Steinbrecher
 James Stockdale
 Tori Hutchins & J. William Stinde
 Jan & Robert Stull
 Yong Jian Xue & Dong Feng Su
 Grace Tan & Simon Su
 Fengge Su
 Jerri & John Su
 Joy & Bernard Sullivan
 Doreen & Doug Summers
 Frances & Daniel Sun
 Joan Sutantyo
 Kiyoe & Hirohisa Suzuki
 Nancy & Eldon Swanson
 Mary & Todd Swanton
 Karen & Stephen Sweeney
 Fealing & Rhett Y. Szu
 Lupe & Paddy Taber
 Sharon & Daniel Takeyama
 Michael Tan
 Peichun & Weiming Tang
 Afton Taylor
 Meredith Taylor
 Donna & Tony Thacher
 Stephanie Wang & Sean Ting
 E. Leroy (Martha) Tolles
 Marion & Emmett Tompkins
 Suzanne & Jon Torgeson
 Lily & Raymond Trinh
 Esther & Benjamin Trujillo
 Joyce Lee & Steve Tsai
 Mey-Shyankuo & Jimmy Tsai
 Bijun & Edmond Tse
 Cynthia Yang & Samuel Tsui
 Toni & Stephen Tuck
 Mary & John Ulin
 Mary Theresa & Robert Ullman

Jean Dea & Seth Vaccaro
 Leona & Keith Valone
 Charlotte Van Fleet
 Karen & Gary Van Wagenen
 Kathleen VanDeWater
 Linda S Wah & James M Okazaki
 Carrie & Scott Walker
 Monica & David Walsh
 Irene & Hans Wan
 Dr. Mathew Wang & Sandy Chien
 Jeanne Wong & Ching Wang
 Laura & Andy Wang
 Haoyu Xu & Dajun Wang
 Xiao Dong Wang
 Jonathan Wang's Family
 Robert Warren
 Julia & Thomas Waterman
 Becki & Alex Watlington
 Donna & Alan Weakland
 Gordon & Shirley Weaver
 Denise & Hubert Weinberger
 Charles & Ann Marie Weinstein
 Ruth Margalit & Issac Weintraub
 Carolyn Weirick
 Teresa & Wallace Welder
 Sally Wenzlau
 Donna Zappa
 & Sprague Wheeler
 David Whistler, Class of 1958
 Judy & Carl T. White
 Helen & Scott Witter
 Julie & Michael Wofford
 Cindy & James Wong
 Marco Wong's Family
 Ann & Ken Wong
 Bi Yu & Dennis Wong
 Ellen & Robert Wong
 Lisa & Stephen Wong
 Sandra & Kenneth Wong
 Shirley Chan & David Wong
 WaiCheung & KeungWah Wong
 Vivien Wu
 Huiqing Wu & Lin Tan
 Yurika & Peter Wu
 Winnie Xu
 Sonia Lee & Ryan Yagura
 Rongpei Lu & Simin Yang
 Ann Na Dong & Tuen-Ping Yang
 Tenaya & Matt Yarusso
 Annie & Alex Yang
 Linda Wallace & Ed Yeager
 Kelly & Lawrence Yee
 The Yeganeh Family
 Margaret Chih & Chee-Juan Yen
 Kristy Wu & Chi Ming Yeung
 Sheree & Cheng Yi
 Hong Sun & Rene Yin
 Shao Yao & Ming Ying
 Sheryl & Yanis Yortsos
 Michelle Mok & Man-Fai Yu
 Rose Yu & Tony Yuan
 Geraldine Lock & Franky Yung
 Lisa & David Yuratic
 Dina & Michael Zappia
 Tina & Peter Zarifes
 Xiao Ling Sun & Meng Lin Zhang
 Jing Juan Xu & Jian Guo Zhang
 Yang Yang & Xiao Dong Zhang
 Yong Liu & Jeff Zhang
 Yvonne Guan & Lin Hua Zheng
 Huiping Lin & Bo Zhou
 Cheryl & Russell Zimmer



STRATEGIC PARTNERSHIPS Make the Difference.

During the last year, the Barth Athletic Center at Huntington Middle School has made great progress. A year after breaking ground, the project is approaching the half-way mark. It replaces a structure built in 1930; our students will soon enjoy a state-of-the-art gym facility and adjoining instructional spaces. This project is an example of the many ways SMSF serves as a strategic partner with the schools by developing and raising charitable gifts and donations in support of key capital needs large and small.





COME JOIN the Celebration!

The San Marino Schools Foundation honored and celebrated the annual generosity and long-term philanthropy of its supporters. For donors who generously gave \$10,000 or more this year, the Foundation hosted a behind-the-scenes tour of and reception at the Rosebowl. Later in the year, we welcomed these supporters to a sit-down dinner at the Flying 'A', home of fellow foundation supporter Aaron Weiss's automobile collection. And as the school year concluded, we saluted everyone who made an annual gift of \$2,500 or more at the Annual Donor Recognition Party hosted by Foundation Trustee Richard Lord and his wife, Sean Ky. To all, we say thank you!



LIFETIME GENEROSITY

This list recognizes lifetime generosity to the San Marino Schools Foundation since our founding.

LIFE BENEFACTOR

Reflects Cumulative Lifetime Giving of \$100,000 or more to SMSF

The AB Charitable Trust The Ayrshire Foundation John & Shauna Barger Jim Barger Avery & Andrew Barth Capital Group Companies Eva & Daniel Chiang	Chinese Club of San Marino Crown City Center, LLC Larry W. Dingus Lorri & Greg Forgatch Georgina Gimbel The Havner Family Foundation Richard & Tracy Hirrel	The Hoffman Foundation The Hurt Foundation Hutto-Patterson Foundation Jamie & Robert Knauss Helen & Richard Marsh Mericos Foundation Margot & Mitch Milias	Miller Living Trust PTAffiliates Stephen Rogers Sue & Steve Silk The Simpson Family Lisa & Tim Sloan Jordan & Yolanda Sollitto	Southern California Edison Joachim Splichal Marjorie & L. Sherman Telleen Valerie Casey & Lawrence Uhl Wells Fargo Cindy & William Wenzlau
--	---	--	--	---

BENEFACTOR

Reflects Cumulative Lifetime Giving of \$40,000 to \$99,999 to SMSF

2040 Fairpark Pine, Inc. The Ahmanson Foundation Anne Alford & Brad Alford Amberwood LLC Anonymous Drs. Alexis & Madhu Anvekar Cynthia & Vincent Ary Bank of America Karen & Frank Beardsley Caroline & Henry Blauvelt Boeing Gift Matching Program Denise & Steven Botsford Ann & Richard Boutin Amy & Jules Buenabenta Marion Riley Campbell & Robin Campbell Michele & Brett Canon Michele & Thomas Carter Jan & John Cate Annie Han & Hunter Chang Jennifer & James Chang Kyung Ah & Hyun Sup Chang Shwu-Nuo Huang & C. Joseph Chang Wen Chih Hsu Chao Kristin & Greg Chapman Tina Siu & Winston Chee Family Linda Yang & Joshua Chen Jean Jiang & George Chen	Miranda Wang & San-Ching Chen Sarah & Fred Chen Yvonne & Raymond Chen Chia-Ling Chen & Ted C. Cheng John Chiang & Elsie Wu Erica Liang & John Chiang Christine Wong & Randal Chin Jane & John Chon City of San Marino Tamara Flowers & Steven Cobb The Confidence Foundation Janice & Joe Conzonire Mr. & Mrs. Joseph R. Conzonire Crown City United Elizabeth & Kris Davis Sally De Witt Deloitte & Touche LLP Charity & Edward Dong East West Bank Vicki & James Elliott GGE Foundation, Inc. Estate of Frederic Byers Jr. Betsy von Kreuter & Juan Carlos Felix Fidelity Charitable The Fletcher Jones Foundation Karen & Jonathan Fu Nicolette & Jay Fuerst	Ann & Rob Gluck Gin & Stephen Goei Wendy Taylor Greenleaf Lavira O. Hall Page & Thomas Haralambos Karen & Mike Harrigian Daphne Stewart & Matthew Hart Elizabeth & David Hasbrouck Lina & Glenn Hatfield Corinne & James Hawk Joni & John Hsu Victoria Sung & Frank Hu Lydia & Stephen Huang Danica & Mark Hughes Cindy & Scott Jenkins Helene & Neal Jenkins Lay Kay Kathie & Ted Kellogg Elayne & Tom Kester Liz & Dennis Kneier Gina Knox Holzman Dr. & Mrs. William & Margaret Ko Sylvia & Peter Koh Adrienne & Chuck Kreindler L.K. Whittier Foundation Landwin Hospitality LLC Benita & James Law Cynthia Chen & Susik Lee	Albert & Pearl Lee Joy & Matthew Lin Lisa & Dave Link Jamie & Michael Linton Brenda & Thomas Liou Anit Chan & Beng Wong Linda & Jeffrey Lo Wendy Hsu & Calvin Lo Curtis & Nichole McClam The McCrary Family Susan & Kevin McDonnell Janice Lee & Brian McMahon Sarah & Eric Miller Pauline & William Montelongo Victoria & Alfred Mordecai Patricia Moreland Christine & Stephen Morris Anne Marie & George Moss Northrop Grumman Corporation Nuveen Investments Harry Olivar Renee & Todd Olson Jill & Rod Perth Karen & Michael Preston Evette & John Ramsay The Repetto Family The Winnie Zhang Family Juliann & Andrew Rooke San Marino City Club	San Marino Rotary Foundation R. Michael Shanahan Rosemary Simmons Patti Smith Shannon & Kevin Snaer Debra & Brian Spaulding Christine Splichal Spring Arts Tower, Inc. The St. Geme Family William G. (Barbara) Steele Patricia & Andrew Stenwall Vicki & Douglas Strugar Sarah & Eric Sun The Talt Family Marge & Alan Talt Jasmin & Tony Tsai Lili Che & Allen Tsai Doris & Adam Von Walt Disney Company Foundation Valerie & Aaron Weiss Susan Zheng & Josh Weng Karen & Robert Wicke Susan & Webster Wong Vivian & Peter Wong Jeri & Tim Wright Chong Hong & Peter Wu
--	---	--	---	---

The San Marino Schools Foundation is committed to ensuring the accuracy of our records. Kindly inform us of any errors in any of the donor listings pages by contacting the office at (626) 299-7014. Thank you.

TRUSTEES

President

John Simpson

Vice Presidents

Jennifer Chuang
Curt McClam

Secretary

Harold Suetsugu

Treasurer

Charles Rodgers

Executive Director

James Lau

TRUSTEES

Sridevi Abboy
Richard Anthony
Erin Bilvado
Michele Canon
Boren Chen
Jennifer Chuang
Andrew Esbenshade
Mark Hughes
Matthew Jiggins
Jennifer Kang
Michael Killackey
Sabrina Kong
Michiko Lee
Richard Lord
Christopher Maling
Curt McClam
Tieu-My Nguyen
Brady Onishi
JiJi Park
James Phelan
John Ramsay
Charles Rodgers
John Simpson
Tina Siu
Harold Suetsugu
David Wang
Vivian Fung Wong
Lawrence Yang
Mark Yee

ASSOCIATE TRUSTEES

Kenneth Bender
Richard Caldwell
C. Joseph Chang
Jennifer Chen
Mary Chen
Yvonne Chen
Connie Ching
Kris Davis
Tamara Flowers
Greg Forgatch
James Frawley
Nam Jack
Scott Jenkins
Alice Khau
Dennis Kneier
Vanessa Koo
Michelle Lee
Janice Lee-McMahon
Lisa Hinchliffe Link
Robert Mauser
David Pierce
Stephen Silk
Brian Spaulding
Michael Spindler
Helen Kim Spitzer
Eugene Sun
Stephen Talt
Jasmin Tsai
Brian Tyler
Mary Ulin
Karen Wicke
Victor Wong
Tim Wright

PAST PRESIDENTS

ACTING CHAIRMAN AND INITIAL TRUSTEE

Thomas Mack 1980-1981

PRESIDENT AND INITIAL TRUSTEE

Phelps Wood 1981-1982

PRESIDENT

Tom Kibler 1982-1983
Richard Ward 1983-1984
Fritz Seares 1984-1985
Dick Pearson 1985-1986
Lois Matthews 1986-1987
Stewart Smith 1987-1988
Knox Cologne 1988-1989
Dave Steuber 1989-1990
Don Crumrine 1990-1991
Richard Giss 1991-1993
Janet Rogers 1993-1994
Jerry Hawk 1994-1995
Scott Jenkins 1995-1996
Teri Pollitt 1996-1997
Diane Feldon 1997-1999
Alan Steinbrecher 1999-2000
Brian Tyler 2000-2001
Chris Norgaard 2001-2002
Kathie Kellogg 2002-2003
Earlene Cheung 2003-2004
Steve Morris 2004-2005
Earlene Cheung 2005-2006
Mary Ulin 2006-2008
Bob Mauser 2008-2010
Brian Spaulding 2010-2012
Michael Spindler 2012-2013
John Cate 2013-2014
Peter Koh 2014-2015
John Simpson 2015-2018

**SAN
MARINO
SCHOOLS
FOUNDATION**
Empowering Excellence.

1665 West Drive
San Marino, California 91108
www.smsf.org



“OUR PATH TO greater success is clear to me, we need to live the change we seek. Everyone can model leadership to others through their own generosity. If those who have never given, do so and those who have been generous, stretch and give a little more, then together the benefit to our schools and our children will be transformative.”

— JOHN SIMPSON, PRESIDENT 2015-2018